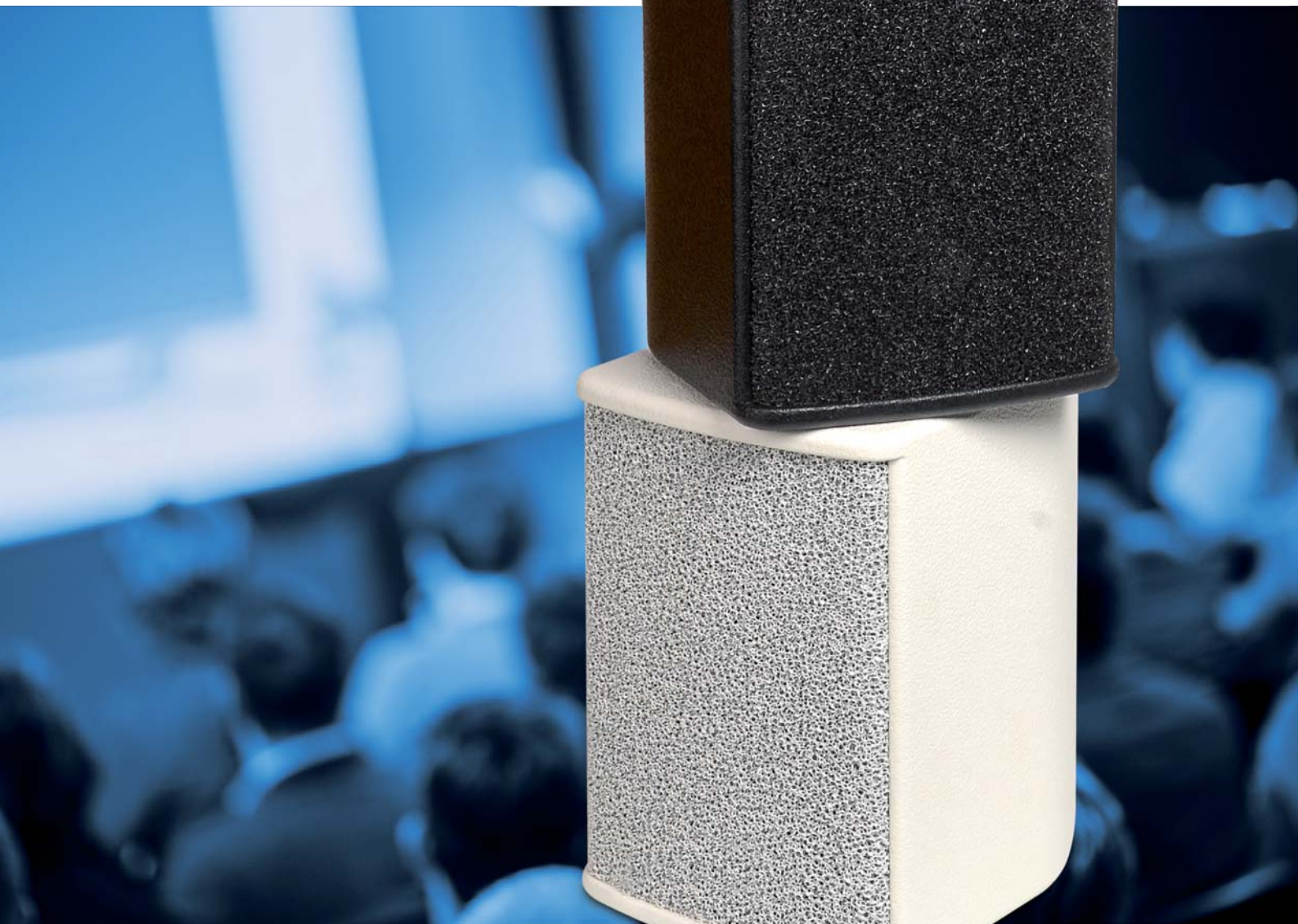


SPEAKER SYSTEMS
ITEC GS5/I



 **ITEC**[®]
itec-audio.com



Designed and Manufactured by
ITEC Tontechnik und
Industrietechnik GmbH
8200 Gleisdorf, Laßnitzthal 300
Austria / Europe

ITEC GS5/I

SPECIFICATIONS

- High performance PA speaker system
- Elegant 2-way full-range loudspeaker, in a wooden housing with 1x5 "neodymium low-mid speaker and 1.1 "neodymium dome tweeter
- Homogeneous radiation behavior
- Integrated crossover with passive filtering for runtime and phase optimization.
- Connection terminal 2x Speakon
- Mounting bracket, optional pan-tilt bracket
- Highly permeable, powder-coated loudspeaker cover made of galvanized steel
- Material: birch plywood with polyurea coating, glued waterproof, in black (RAL 9011) or white (RAL 9010), weatherproof, ball impact resistant



ITEC GS5/I

DIMENSIONS



CONNECTION TERMINAL

- 2x Speakon
- Screw clamp



MOUNTING ACCESSORIES

Standard bracket



Pan / tilt bracket 30 °



Pan / tilt bracket

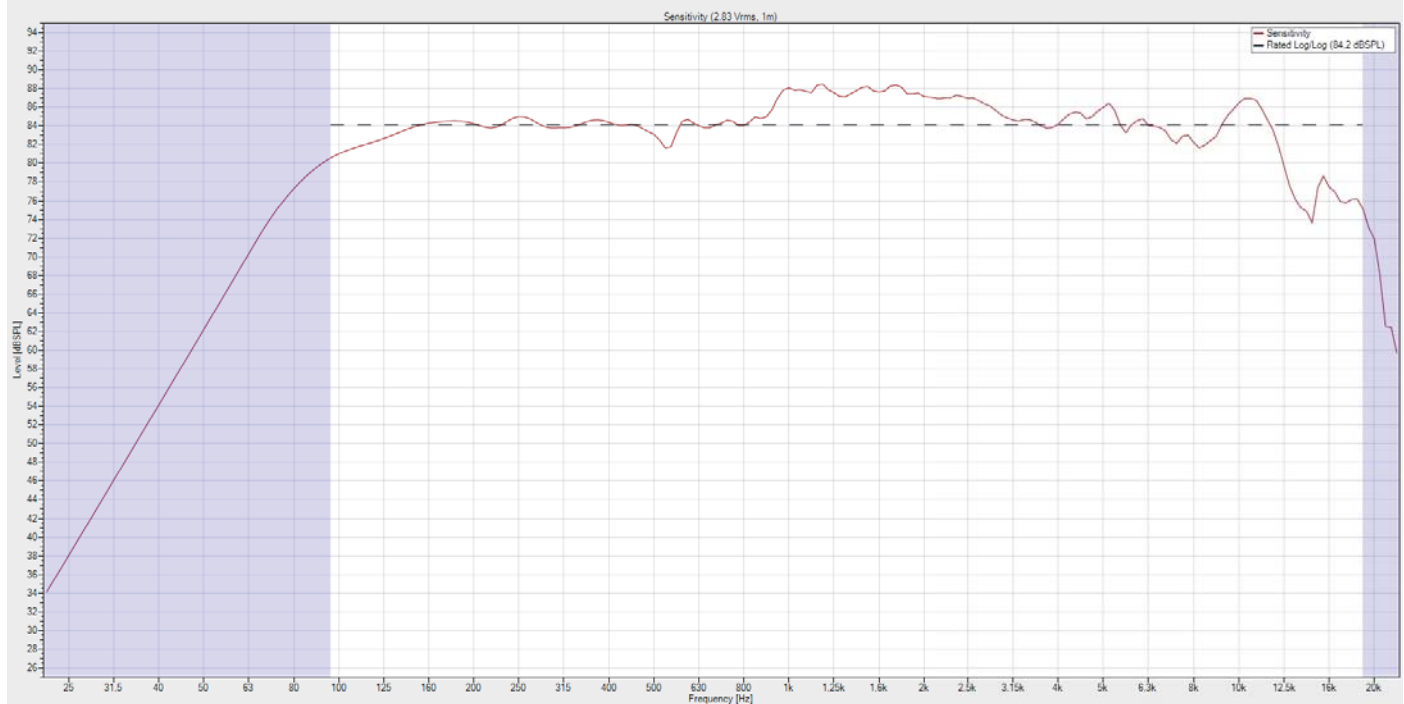


ITEC GS5/I

TECHNICAL SPECIFICATIONS

MODEL	GS5/I
Power rating	130 W / 260 W
Nominal sound pressure	84,2 dB SPL / 2,83 V / 1 m
Max. sound pressure	107,9 dB SPL
Frequency response -6 dB	88 Hz - 19 kHz
Impedance	8 Ohm
Driver	1x5 Low midrange speakers (1,5" VC), 1,1" dome tweeter, Angle: Horizontal 180 ° / 120 ° Vertical
Dimensions (W x H x D)	160 mm x 225 mm x 186 mm
Weight	ca. 3,6 kg
Housing	Birch plywood
Coloring	Polyurea coating in black or white

Data Shown: GS5-1 (ITEC Tontechnik GesmbH)
Display Parameters: Frequency: 1000Hz (1/24th Octave) Mer: 0° Par: 0°



All Information without guarantee. Subject to technical changes.



ITEC- Tontechnik und Industrieelektronik GesmbH, A-8200 Lassnitzthal 300
Tel.: +43 (0)3133 / 3780-0, office@itec-audio.com, www.itec-audio.com